



CLX GA Pilots Fly-In 2022

Dear CLX GA Friends,

Thank you all for completing the initial questionnaire.

This document serves to inform about the various options available, to organize our Fly-In. The follow-up questionnaire is online and the link to it is at the end of this document. To support the questionnaire, notes and information on each airfield are listed.

In response to an earlier question pertaining to the freedom to bring family members along, any rules to this effect would perhaps be misplaced. Please bring or invite those who share or need an introduction to our passion for aviation. We are a solid core of Cargolux pilots and if we are joined by retired colleagues, ex-colleagues, Luxair or other Luxembourg-based pilots, friends, family or someone you figure just needs a break, surely the outcome will be the merrier because of it.

The challenge of participation surely leans on making free time for it and further to above, regardless of the format and length of the event, even partial participation will be welcome.

Which brings up the matter of format and length. Depending on the airfield chosen, we could opt for a 2-evening event with a Friday afternoon arrival and Sunday mid-day departure or 1-evening event with a Saturday arrival and Sunday departure.

Some airfields have events planned in July which would mostly keep us entertained during the day and other locations require us to do some more organization ourselves. Suggestions are hereby requested and very welcome.

Certainly perhaps, there may be an error or wrong assumption for one or the other airfield. Please don't hesitate to point it out.

Looking forward to your input!

Yours always,

Wieger.



CLX GA Pilots Fly-In 2022

Airfield options:

Bad Dürkheim – EDRF

Runways:

08 ASPH TORA 450 LDA 600

26 ASPH TORA 600 LDA 450

Fuel:

100LL

Super Plus 98

Location:

NE edge of the Palatinate Forest, 11 Nm west of Mannheim.

[Webpage](#)



Notes:

-Good infrastructure for event planning:

- Camping near airfield field possible on camping site
- Catering / Restaurant options plenty in immediate vicinity
- Some lodging available at walking distance and more within 2 Km
- 80 Nm from Luxembourg

-With regards to Saturday evening BBQ, we can determine the format / quality

-Saturday daytime activities to be organized:

-Breakfast to be organized

-Given the availability of Wineries and Restaurants in the immediate area, this airfield field is probably quite suitable for a Friday evening – Sunday mid-day schedule

-Locally-based CLX pilot with good local connections for organization.



CLX GA Pilots Fly-In 2022

Bienenfarm – EDOI

Runways:

12/30 GRASS TORA 860 / LDA 860

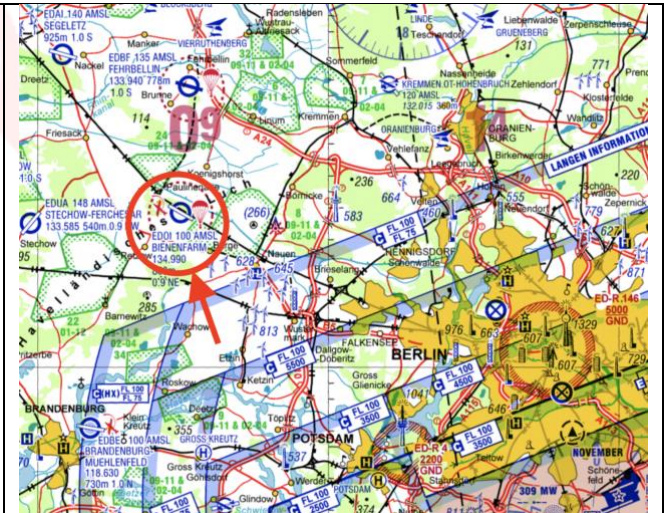
Fuel:

100LL

Location:

25Nm WNW of downtown Berlin

[Webpage](#)



Notes:

-Well prepared for events and fly-ins:

- Restaurant and BBQ facilities
- Camping facilities on-field including breakfast offering at the airfield restaurant
- Hotels nearby
- Airshow-style Stearman Fly-In event organized on July 2nd-3rd
- Friday evening event could take us to downtown Berlin for good food and drink.
(🍷🍺...Touring Car to and from Berlin)

-Quite a distance from Luxembourg (300 Nm)

-With regards to Saturday evening BBQ, we would probably need to follow the airfields organized format

-Very suitable for a Friday – Sunday event.



CLX GA Pilots Fly-In 2022

Paderborn Haxterberg – EDLR

Runways:

06 ASPH & GRASS TORA 850 / LDA 750

24 ASPH & GRASS TORA 750 / LDA 850

Fuel:

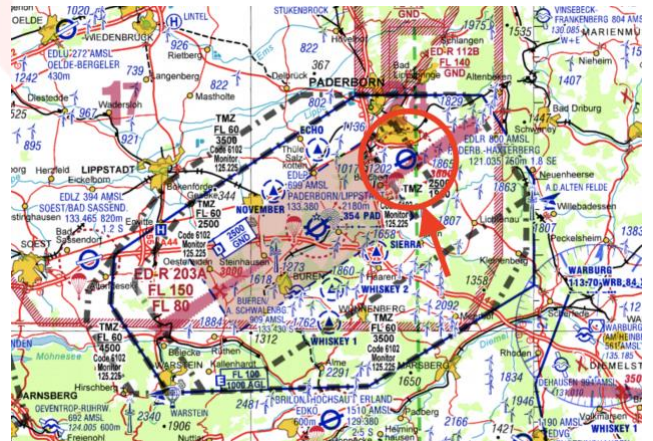
100LL and Super Plus 98

From a certain upload, the landing fee is waived

Location:

Just outside the southern outskirts of Paderborn City.

[Webpage](#)



Notes:

-Good infrastructure for event planning:

- Restaurant and BBQ facilities
- Camping facilities on-field
- Hotels +/- 5 minutes away
- Friday evening event could take us to downtown Paderborn for good food and drink

-With regards to Saturday evening BBQ, we follow organized format

-Saturday daytime activities to be organized

-Breakfast to be organized

-Locally-based CLX pilot is organizing an event we may join on 2nd weekend of July.



CLX GA Pilots Fly-In 2022

Bitburg – EDRB

Runways:

05 ASPH TORA 1200 / LDA 1050

23 ASPH TORA 1080 / LDA 1050

Fuel:

Luxembourg - ELLX 100LL

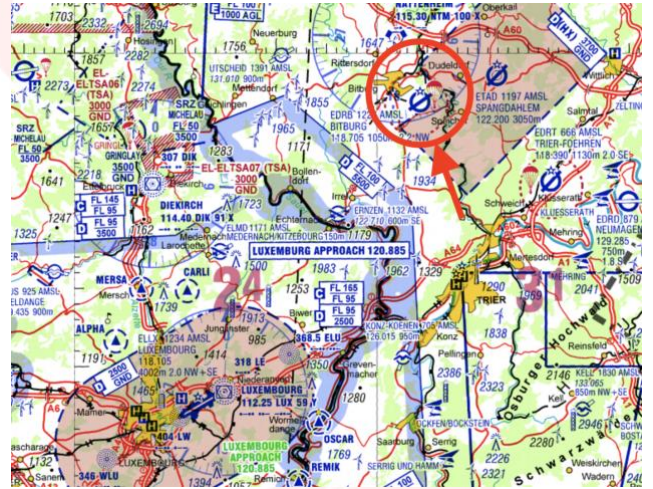
Trier EDRT - 100LL

Dahlemer Binz – EDKV 100LL and Super Plus 98

Location:

Just outside the southeastern outskirts of Bitburg City. 25Nm NE of Luxembourg.

[Webpage](#)



Notes:

-Good infrastructure for event planning:

- Newly renovated restaurant Blue Sky with good inside and outside seating. ([Website](#))
- Camping on-field possible
- Lodging available in Bitburg
- Close to Luxembourg
- Introductory glider and airplane rides for drive-in guests and invitees

-With regards to Saturday evening BBQ, we can determine the format / quality

-Saturday daytime activities to be organized

-Breakfast to be organized

-Probably more suitable for a Saturday – Sunday event



CLX GA Pilots Fly-In 2022

Doncourt - LFGR

Runways:

08/26 GRASS TODA LDA 1000m

Fuel:

100LL with Total Card.

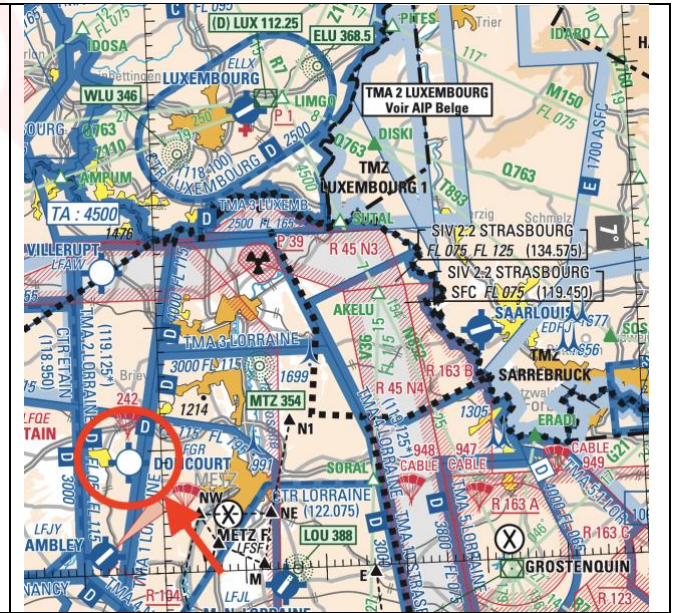
Cash if club personnel available.

Location:

10nm W of Metz

30nm SSW of Luxembourg

[Webpage](#)



Notes:

-Infrastructure for event planning:

- Catering service to be organized for daytime, Saturday evening BBQ and Sunday morning breakfast
- Camping on-field possible but limited 24H hygienic facilities available unless specifically organized
- Lodging 20-24 Km away in Metz
- Close to Luxembourg
- Introductory glider and airplane rides doable for drive-in guests and invitees

-With regards to Saturday evening BBQ, we can determine the format / quality

-Saturday daytime activities to be organized

-Probably more suitable for a Saturday afternoon – Sunday morning event

-CLX colleagues with good local connections for organization.



CLX GA Pilots Fly-In 2022

Aalen Elchingen – EDPA

Runways:

09/27 ASPH Grass TORA LDA 950

Fuel:

100LL

Mogas

Diesel

Location:

40Nm E of Stuttgart

[Webpage](#)



Notes:

-Good infrastructure for event planning:

- BBQ reported to be no problem
- Camping on-field to be confirmed
- Lodging “Landgasthof”-style in villages around the airfield
- Distance to Luxembourg 165 Nm

-With regards to Saturday evening BBQ, we can determine the format / quality

-Saturday daytime activities to be organized

-Breakfast to be organized

-Probably more suitable for a Saturday – Sunday event.

[LINK TO THE QUESTIONNAIRE](#)